

# PUZZLE

Can you match the items to the correct location on the map?



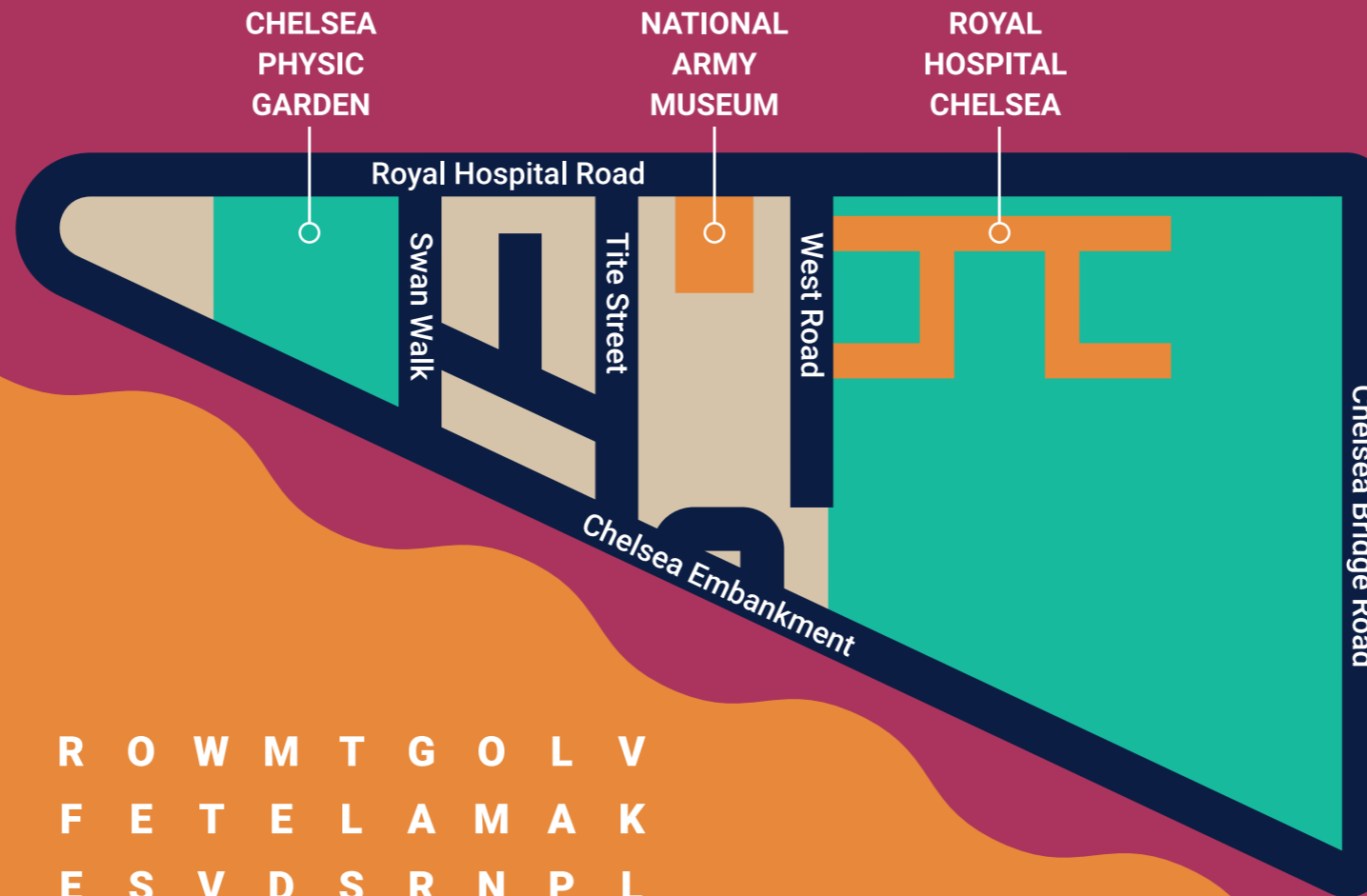
Medal



Bee



Drum



# TIME TRAVEL CHELSEA



# FAMILY TRAIL

Take as much or as little time as you want. Feel free to press pause, come back and try out during different times of the year - you may end up spotting different things!

NATIONAL  
ARMY  
MUSEUM



R O W M T G O L V  
 F E T E L A M A K  
 E S V D S R N P L  
 R O W A H D E K M  
 C H E L S E A N U  
 A I S O T N L T S  
 F S T I I V P L I  
 E T U N K T L A C  
 S O N R A I A N T  
 T R I C O R N E O  
 I Y F U W U T T U  
 V G O O E C H E L  
 A R R I H F U N A  
 L G M H T R I S C

# WORDSEARCH

Can you find the following words?

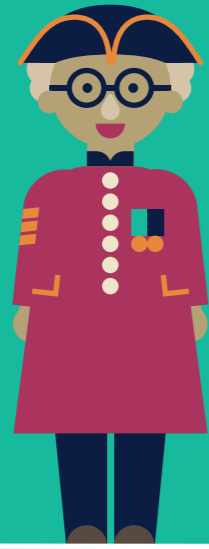
- |         |          |
|---------|----------|
| GARDEN  | FESTIVAL |
| HISTORY | GROW     |
| CHELSEA | TRICORNE |
| PLANT   | TANK     |
| MUSIC   | MEDAL    |
| FUN     | UNIFORM  |

This trail will help you explore Chelsea, travelling along the Royal Hospital Road. Try our different activities and discover more about the Royal Hospital Chelsea, the National Army Museum and the Chelsea Physic Garden.

CHELSEA  
HISTORY  
FESTIVAL



## ROYAL HOSPITAL CHELSEA



*The Royal Hospital was founded over 300 years ago by King Charles II. It is a place where men and women who have served in the Army can retire and relax!*

Look out for the statue of a Chelsea Pensioner. Can you strike the same pose?

There is a special ceremonial cheese cutting ceremony at the Hospital to celebrate Christmas. What is your favourite way to celebrate a special occasion?

Fun Fact: Chelsea Pensioners wear special uniforms in the colour scarlet, with a tricorne hat. Tri means it has three corners, like a triangle!

## NATIONAL ARMY MUSEUM



*The National Army Museum tells the story of the British Army and the soldiers who served in it. Go on an adventure through the Museum's galleries to find thousands of fascinating objects.*

Attention! How good are your marching skills? March on the spot for 30 seconds and show everyone how it is done!

It is hard to miss the Challenger 2 tank outside the Museum! What do you think it is made from?

All sorts of animals have helped the British Army. Why not step inside and see how many animal themed objects you can spot in the Museum.

## CHELSEA PHYSIC GARDEN



*The Chelsea Physic Garden was founded in 1673. Today, the garden is home to over 4,000 different edible, useful, and medicinal plants that have changed the world.*

Take a deep breath in and connect with your senses. What can you smell, taste, hear, feel, and see?

Watch how trees and leaves move in the wind. Can you move your body like a plant and make a garden-inspired dance?

Did you know the garden contains plants that are used as medicines, as well as plants that are poisonous?

## FAMOUS CHELSEA



*The Royal Borough of Kensington and Chelsea has been home to many famous people! You never know who might have walked down Royal Hospital Road in the years gone by.*

Bob Marley loved to make music! Can you create a song about your adventures today? Stomp your feet, clap your hands and be as loud as you can!

Bram Stoker worked in a theatre and wrote a famous spooky story about a vampire called Dracula. Dracula could transform into a vampire bat! Can you stretch out your arms like wings and fly down the rest of the road?

Christine Granville was a Polish spy during the Second World War. Take your favourite colour and the name of your street - Put these together to find your secret code name!

